



CELEBRATING 125 YEARS

A PICTORIAL HISTORY
1894 ~ 2019

SANDRA RIGNEY • HARRIET THOMPSON

19.

Signatures
to the foregoing Constitution of
Saint Andrew's Parish of Wellesley.

Names	Residence
H. W. F. Young	Waban St. Wellesley.
Lizzie J. Young	" " "
R. H. Young	" " "
Edith C. Tutta	Tana Hall
E. B. Fowle	Wellesley Avenue
Allen G. Fowle	" " "
Hammie Conran	Wellesley College
Elij. Ritchie	Wellesley College
Gredonia W. Case	Wellesley College
Maria R. Russell	Wellesley College
Mary G. Parker	Dana Hall
Theo Estabrook	Washington Street
W. W. Tailby	London St
J. J. Watty	Washington St.
John A. Porter	Blossom St.
Dan Sharp Pratt	Washington St. Wellesley Hills
Annie F. Pratt	" " " "
Caroline J. Cook	Dana Hall
Bertha L. Lowell	Stage St. Wellesley.

CELEBRATING 125 YEARS

A PICTORIAL HISTORY
1894 ~ 2019

Compiled by Sandra Rigney
with Harriet Thompson



ST. ANDREW'S EPISCOPAL CHURCH • WELLESLEY • MASSACHUSETTS

BIBLIOGRAPHY

Any history of St. Andrew's relies heavily on three sources:

E.E. Bancroft, *Historical Sketch: St. Andrew's, 1842-1942*. Wellesley, Massachusetts, 1942.

Gertude Green Cronk, *The Memorial Windows of St. Andrew's Church*. Wellesley, Massachusetts, 1983.

Jean C. Proctor, *St. Andrew's Episcopal Church, 1894-1994: A Centennial History*. Wellesley, Massachusetts, 1994.

Other invaluable sources for anyone looking into St. Andrew's history are the papers found in the archives and created by those dedicated parishioners who, over the years, have kept track of the church's many activities.

PHOTO CREDITS

Elizabeth F. Bennett, p. 4, Wellesley College Archives, Library & Technological Services; Adele Lathrop, p. 8, Dana Hall School Archives; Rev. Norman Hutton, p. 7, Elizabeth Hudacko; Robert Harvey letter p. 15, Jennifer Harvey. Photos of church and related activities throughout: Rob Brandt, Laura Brown MacKinnon, Katharine Clark, Liz Dean, Heidi Harper, Steve Killeen, Peter B. Lull, Cam McCormick, Sandra Rigney, Paul Shackford, Jonathan Vogel-Borne, Jennifer Waddell, and Dede Woods.

Every effort has been made to identify contributors to the photos in this book.

This book is dedicated to the founders of St. Andrew's, who, over 125 years ago, saw the need for an Episcopal place of worship in Wellesley, and to Francis Welles Hunnewell whose generosity and kindness made so many things possible. Together, these people laid a foundation for what we truly love about being a part of St. Andrew's.



© 2019 St. Andrew's Episcopal Church
79 Denton Road
Wellesley, Massachusetts 02482
www.standrewswellesley.org

All rights reserved.

No part of this book may be reproduced in any form, or by any means, without the written permission from the publisher.

Printed in the United States of America

Preface

TWO YEARS AGO I was invited by our rector, Adrian Robbins-Cole to take on the project of researching and designing a pictorial history book of our parish for our 125th celebration. It has been quite a journey. I have learned so much about our parish in a relatively short period of time. The support I have received has been outstanding, and I have many people to thank.

Katharine Clark spent many hours answering my questions and guiding me in the right direction. Harriet Thompson provided camaraderie and laughter, vital ingredients for any project, while we plowed through the archives.

Peter B. Lull took lovely pictures of obscure and sometimes very fragile items for inclusion here. His support and advice on snippets content for the Sunday bulletins and this book was invaluable.

Patricia Carda wrote the features and introductions, and advised me on all things book-related. We spent many hours reviewing and planning the content and makeup with a lot of laughs along the way.

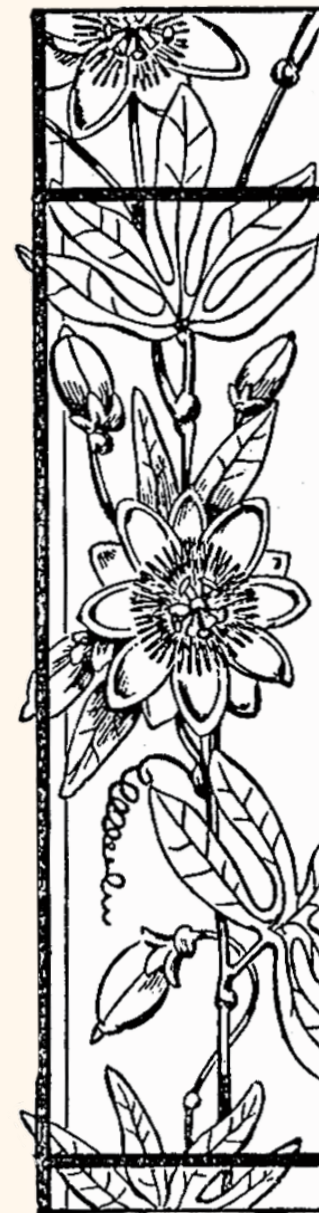
Finally, Jonathan Vogel-Borne's superb creative technical expertise and patience translated my design into the pages you see here.

I am most appreciative of the many parishioners who have been kind enough to tell me how much they have enjoyed History from our Archives. Many of these individuals have offered additional information and stories about St. Andrew's. I thank you all. I especially thank Laura Brown MacKinnon, Janet Flett, Janet Giele, Pam Henrikson, Pat MacKinnon, Karen Melican, Dot Reed, Paul Shackford, Barbara Shellito, Lynda Sperry, Becky Taylor, and Steve Taylor.

I hope you enjoy this journey through St. Andrew's past.

Sandra Rigney

Wellesley, Massachusetts
November 2019





Episcopal Diocese of Massachusetts

Office of the Bishop The Rt. Rev. Alan M. Gates, Bishop

Loving God, as we celebrate the 125th Anniversary of St. Andrew's, we give thanks for the many blessings that you have bestowed upon our parish since its foundation. As we look to the future, we ask that the Holy Spirit will continue to guide us in the way of your son Jesus Christ.

We pray that St. Andrew's will continue to be a sign of Christ's love to all who enter the doors of this church and to the wider community beyond its walls.

Amen.

Dear People of St. Andrew's Church,

Throughout the ages it has been a distinguishing characteristic of the people of God that they remember their history. The lives touched by the ministry of St. Andrew's these past one hundred twenty-five years have been immeasurably enriched—as, indeed, has the life of the wider Diocese of Massachusetts. The history of that ministry is here recollected.

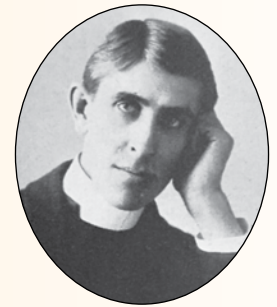
May these pages evoke delight, gratitude, and renewal of your commitment to one another and to God's call in the world around you.

Congratulations and Blessings upon your 125th anniversary!

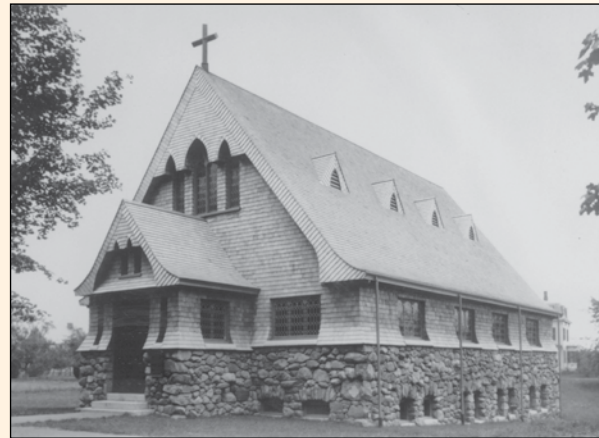
The Rt. Rev. Alan M. Gates
Bishop XVI of Massachusetts

1894 ~ 1900

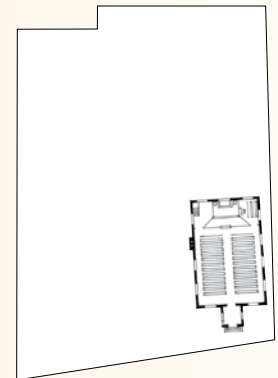
ON SEPTEMBER 1, 1894, the *Wellesley Review* published an article on the construction of a new chapel in town. The chapel, which would be named after its parish—the parish of St. Andrew—would have a 225-seat capacity and was to be a “simple and unpretentious adaptation of a Gothic structure” with a fieldstone base, shingling above the base, and leaded cathedral glass. When St. Andrew’s opened on November 30, the *Review* reported, “Wellesley may well be proud of this latest addition to her property, for Saint Andrew’s chapel belongs to the public, being free and open to all who choose to worship in it.”



The Rev. William E. Hayes
1895–1901



St. Andrew’s Church, Plymouth, England, and its namesake, St. Andrew’s Church, Wellesley, Massachusetts, 1894



1875

First record of an Episcopal service in Wellesley.

1887

Large congregation present at Episcopal service held in the Town Hall. Five children baptized.

1892

Bishop Paddock approved establishment of a mission that came to be called Christ Mission.

Mission became a fully organized parish with an elected warden and vestry on March 22.

John A. Porter, who had emigrated from Plymouth, England, and was active in the effort to found an Episcopal church in Wellesley, suggested naming the new parish St. Andrew's after his church in Plymouth. Porter was a stonemason and helped with the construction of St. Andrew's. He was the first senior warden.

1894

A shingle-style, neo-gothic church building was constructed at a cost of \$6,000.

1897

A branch of the Girl's Friendly Society was formed.

1899

The Rectory was built on an adjacent lot in a style similar to the church.

"All the good work heretofore must be regarded from the church's point of view . . . there is a peculiar and loud call for the development of a church in Wellesley."

—Bishop Benjamin Paddock, December, 1890



"In forming the organization of the Parish at Wellesley it would be best that women should not be, by its terms, excluded from its offices."

—Bishop Phillips Brooks, 1891

"Oh, 'twas a joyful sound" was the opening line of the processional hymn sung at the first service held in St. Andrew's Chapel on November 30, 1894, at nine o'clock.

A recent sale by the Girl's Friendly Society (GFS) made over twelve and a half dollars, which, with ten dollars already in the treasury, will make almost enough to purchase a banner to carry in the procession of the annual diocesan services in May.

—January 28, 1900



The parish adopted articles of incorporation and voted to build. Borrowed \$3,500 as an initial mortgage. —1894



"The Episcopal Church is not a private club, but a public institution. It is open to all who are helped by a dignified liturgical service."

—Rev. William Hayes, Opening service, 1894



The cornerstone was laid June 18, 1894.

1901 ~ 1920

IN THE YEARS BETWEEN 1901 and 1920, St. Andrew's settled into its new home. In 1901, the church purchased its first pipe organ. In 1914, a Sunday school picnic with a "bountiful luncheon" and ice cream and candy laid the foundation for future parish picnics. By 1915, however, parishioners were listening to graphic accounts of life in the trenches of World War I and the use of gas masks. In 1917, the Altar Guild donated the amount saved on Christmas decorations to the Red Cross, and Sunday school children went without Christmas candy to send Christmas fund money to the starving children of Europe.



St. Andrew's Church, Wellesley



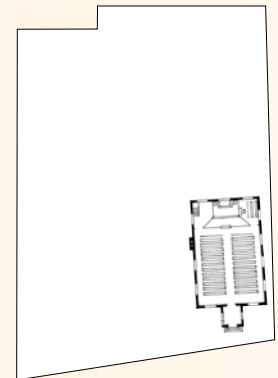
Rectory of St. Andrew's Parish



The Rev. George Nattress
1901-1913



The Rev. Ellis Dean
1913-1922



1901

The Senior Warden found it feasible to hold two services on a Sunday. If two services were held, the rector received \$15. If one service was held, payment was \$10; railroad fare to and from Boston or vicinity was an additional payment.

1902

First pipe organ was installed and used until 1942.

1903

Land behind church was purchased for future expansion.

1905 and 1906

The Girl's Friendly Society donated money toward the church land debt.

1907

The yearly rummage sale was held. It was now regarded as an annual event to be looked forward to each year.

1914

Through the generosity of parish members, a complete set of new hymnals was provided for the choir.

After the Easter Day service, a plant was given to each child.

1917

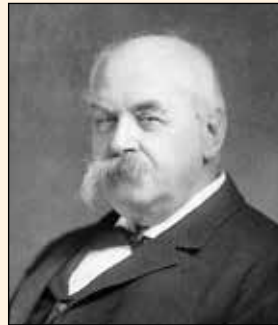
To house some of the offices and parish functions, the Guild House was built along Denton Road East.

1920

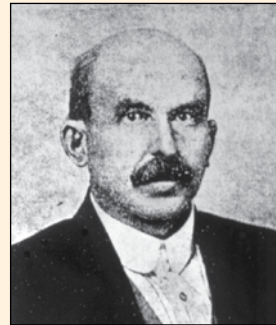
First mention of the church periodical club at St. Andrew's.



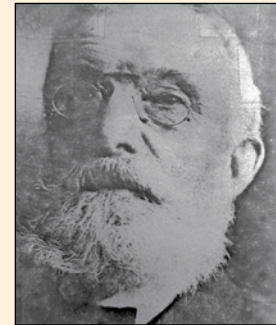
From the early 1900s, Denton Road was crowded with Episcopal students from the Dana Hall School walking to the Sunday morning service at St. Andrew's.



Francis W. Hunnewell,
1838–1917



Reuben K. Sawyer,
1851–1914, founder



Joseph Tailby,
1842–1918, founder



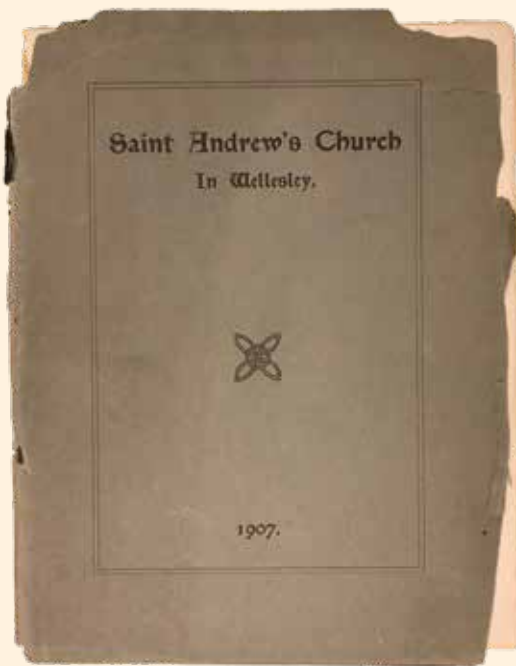
Elizabeth F. Bennett,
church secretary 12 years

If an income of about \$1500 per annum can be assured to the Treasurer, there need be no anxiety about the finances. —1903



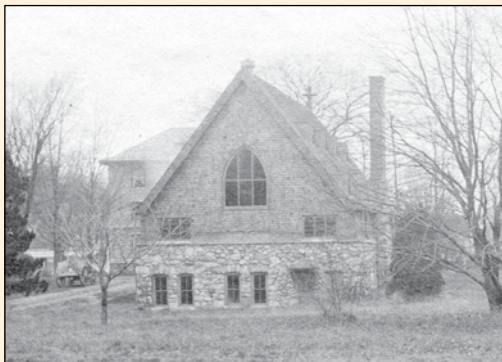
The rummage sale is now regarded as a regular affair and looked forward to each year. The attendance this year included a large number of village people as well as a large number from neighboring towns. —1908





Annual report, 1907

COURTESY OF THE WELLESLEY HISTORICAL SOCIETY, WELLESLEY, MASSACHUSETTS



Rear view of chapel

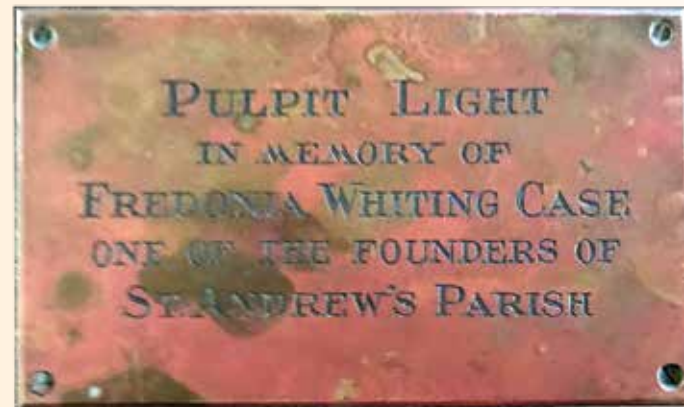
Bishop William Lawrence authorized a service of intercession for peace in the world. President Taft requested all God-fearing persons to repair to their several places of worship, and offer supplication to Almighty God for the restoration of peace.

—1914

One of the largest private confirmations which have ever taken place in the diocese was at St. Andrew's Church, Wellesley, on September 17, 1914 when a class of nine was presented to Bishop Babcock by the rector, E.B. Dean.

Patriotic hymns will be sung and the "Stars and Stripes" carried in the procession on Sunday. Every American ought to share in the church's celebration of Independence Day. —July 4, 1915

Charles C. Coveney of Cambridge was chosen to design the altar and reredos for the Hunnewell memorial.



COURTESY OF THE WELLESLEY HISTORICAL SOCIETY, WELLESLEY, MASSACHUSETTS



Choir 1914

Altars and Alterations

What makes an altar? Prior to the opening of St. Andrew's Church, a "big dry goods box . . . covered . . . with green cloth" was the altar for Episcopal services in Wellesley. This should not be too surprising, given that from 1875, when Wellesley was still West Needham, until the opening of St. Andrew's Church, the town's Episcopal services led a rather peripatetic existence, moving from Waban Hall in Wellesley Square, to a small YMCA on Church Street, to the town hall, then, briefly, to a hall over a wheelwright shop on Washington Street, and finally in 1886, to the new town hall.

With its doors open to welcome all in 1894, St. Andrew's settled into its new home with an "altar, a nearly complete set of altar hangings, and a brass cross" given to it by St. Mary's Church in Newton, Lower Falls. In 1899, a rectory was built, thanks to the generosity of Francis Welles Hunnewell, an active member as well as benefactor of St. Andrew's and the town. When Hunnewell died in 1917, he left \$10,000 to the church. After some discussion, the parish voted to use a portion of his bequest for a memorial to him and selected an altar and reredos. The inscription on the beautifully carved reredos read: *In memory of Francis Welles Hunnewell / this Altar and Reredos placed here by / St. Andrew's Parish / Easter Day 1920 / To the Greater Glory of God.*

By 1963, even after five previous building projects, St. Andrew's congregation had outgrown its space. To meet the needs of the growing congregation, aging building, and new organ, the 1921 parish hall was converted to a transept chapel, and after some discussion, the Hunnewell altar and reredos were placed there. In the main sanctuary, a freestanding

altar, given in loving memory of Edward Hyde Earle, was installed. Some may have feared the clean lines and simple dignity of the new altar would clash with the more traditional style of the Hunnewell altar in the transept chapel, but there was no clash.

Given the altars that have graced Episcopal services in Wellesley both before and after St. Andrew's was built, indeed before West Needham became Wellesley, it is clear an altar can be made from almost anything as long as the form it takes is that of a table, a table set for those seeking forgiveness, strength, comfort, peace.



1921 ~ 1930

BY 1921, A RETURN TO THE PEACE AND PROSPERITY of earlier years seemed to be at hand. The influenza pandemic, which had swept across the globe and even caused the board of health to shut down church services for three weeks, had ended. St. Andrew's membership was growing steadily. To accommodate this growth, plans were drawn up for a new parish hall and a 20-foot enlargement of the chancel, which would increase seating by 80 seats. An exterior cross was added at the juncture of the existing chancel and the enlargement, and a plain stucco façade was chosen for the exterior.



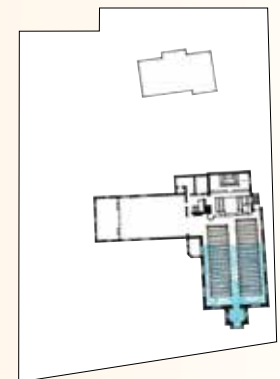
Colorized photo of Christmas in the sanctuary



The Rev. John J. Callan
1923–1928



The Rev. Norman Hutton
1929–1934



1922

Expansion of church and new parish house.

Diocesan convention voted to allow women to serve as lay delegates.

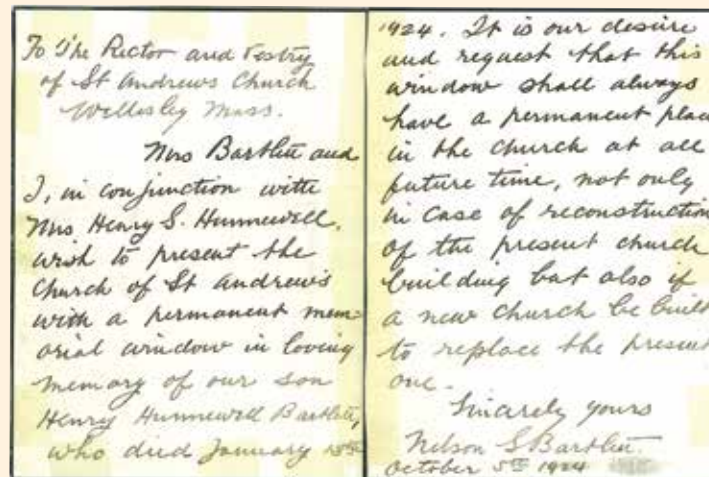
1924

Edith Tufts of Wellesley College and Adele Lathrop of Dana Hall elected to the vestry, an unusually early recognition of the role of women in the church.

The Hunnewell Bartlett Memorial Altar window was installed in the newly expanded chancel above the main altar.



Pulpit



1927

The Sawyer Memorial Porch was added at the intersection of the new parish hall and the main church. A small plaque now marks the location of the porch.

1929

Rev. Norman Hutton, D.D. was installed.

Under the leadership of Mrs. Arthur Harvey, the Service League so flourished that it was able to offer support for the completion of various projects, including refinishing the floor in the parish hall. —1928

The attendance at the church school last Sunday was 72 and we started with 40. If all of us work, we can have 100 by Thanksgiving if we keep up this pace. The school is worthy of support, the teaching staff is efficient, and the atmosphere is bright and attractive. —1929



Adele Lathrop, 1875–1956

A Christmas Wish

FROM THE RECTOR OF
SAINT ANDREW'S

I wish you a Happy Christmas and a New Year marked by faith that shall carry you triumphant over difficulties.

A discernment that you may not despise small duties while looking for great occasions. A readiness for opportunity by the discipline of steady work. An eagerness for ventures of service. A courage for the sacrifices you must make in your life.

I hope the precious hours of the future will be used in keeping well, in tasks worth while, in efforts that are commensurate with your abilities, in ambitions that are born of idealism, in loyalties that will not disappoint, and in worship that will bring you peace.

Faithfully your friend,

Norman Hutton

Wellesley, Mass., December the twenty-fifth
Nineteen hundred thirty

ST. ANDREW'S CHURCH
616 Washington Street
Wellesley, Massachusetts

Rev. Norman Hutton, D. D., Rector
Telephone Wellesley 0804

} back
of
envelope

The earth in this envelope is from the Hill of Calvary - brought and placed here by Mr. Goodwin who maintains the organ for worship in God's House.

1930

The rector is sending to every parishioner whose name is on the record a little Christmas greeting written by him. With it goes a registration card for your Communion. Fill it out and drop in the Alms basin. Please remember the parish in your Christmas giving and give as generously as you can.

—1929

Several changes have been made during the past week that have to do with the sanctuary. We have shifted the choir stalls in an effort to make more seats. The present arrangement is an experiment; we hope it may solve our problem of overcrowding. We have a choir of almost 40, and only seats for 30.

—1930



A Kaleidoscope of Color

There is something about stained glass that demands attention. As light shifts across one glass piece and then another, it is as if a kaleidoscope is slowly turning, revealing new colors and shapes with each turn. St. Andrew's is fortunate to have some beautiful windows that have been lovingly described by Gertrude Greene Cronk in *The Memorial Windows in St. Andrew's Church* (1983.) All of them were created by remarkable craftsmen—the d'Ascenzo studio, Earl Edward Sanborn, Wilbur Herbert Burnham, Connick Associates, and Rowan and Irene LeCompte—following the neo-gothic, or medieval, style of stained glass even when using abstract designs.

The work of the D'Ascenzo Studios of Philadelphia, which was opened in 1898 by Nicola D'Ascenzo, can be found in the Washington Memorial Chapel at Valley Forge, the Folger Shakespeare Library in Washington D.C., and in a variety of public buildings. Between 1923 and 1924, the studio was asked by Nelson S. Bartlett, Christiana Hunnewell Bartlett, and Mrs. Henry Hunnewell to design a memorial window for their son and grandson Henry Hunnewell Bartlett who died at the age of four. Installed in the chancel in 1924, the window was St. Andrew's first memorial window. At the top of the three panels that make up the window is a gold band inscribed "And a little child shall lead them." In the center is the Madonna holding the Christ Child in her arms. In making their gift, the Bartletts and Mrs. Hunnewell asked that the window have a permanent place in the church, even if a new church were to be built at some time in the future.



Detail Bartlett window



Bartlett window



Saint Joan of Arc and Sir Galahad windows



Albert Schweitzer window



Detail of Wood window

Earl Edward Sanborn (1890-1936), who was considered by the Reverend Norman Hutton to be one of the best stained glass artists in the country, designed two memorial windows, Saint Joan of Arc and Sir Galahad, for installation in the north aisle in 1931. Among Sanborn's works before his death in 1936 were the Te Deum windows at the National Cathedral and the windows for the Bapst Library of Boston College. In the center lancet of the Saint Joan window, which was given in memory of Agnes Wilkes Rankin, Saint Joan stands dressed in armor, holding a standard with a white banner. Each side panel depicts scenes from her life. There is no record of the giver. In the Sir Galahad window, which was given in memory of Julia, Charles, and Elizabeth White through a provision in Elizabeth White's will, Sir Galahad, like Saint Joan, stands dressed in armor in the center lancet. The side panels depict his lifelong quest for the Holy Grail, not his knightly exploits.

Between 1951 and 1961, Wilbur Herbert Burnham (1887-1974), an early advocate of the neo-gothic tradition, designed ten of St. Andrew's memorial windows. Burnham also designed windows for St. Peter's Episcopal Church in Cambridge, the Cathedral of Saint Peter and Saint Paul in Washington, D.C., and the Cathedral of Saint John the Divine in New York City. For St. Andrew's, Burnham designed the Tailby, Hart, and Huntington windows, installed between 1951 and 1952, the Porter window and the Wood window in 1955, the Albert Schweitzer window, designed with his son in 1960, and the Lathrop, Bridges, and Hutton windows, installed along south wall in 1961. The two Lathrop windows act as book-ends for the Bridges and Hutton windows.

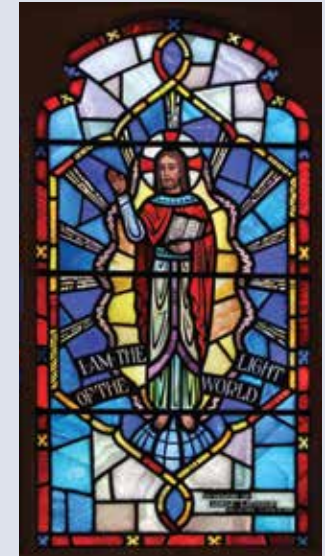
Given by Roselle Lathrop Shields in memory of her sister Adele Lathrop, the Lathrop windows speak to Ms. Lathrop's scholarly interests as well as to her devotion to teaching and her church. She was one of the first two women to be elected to St. Andrew's vestry and served from 1924 to 1926 and again from 1941 to 1943. She also taught at Dana Hall and Pine Manor Junior College. Written across the central lancet of the left window is, "I am the Light of the World." A standing Christ figure holds a Bible in his hand. Side lancets depict the peoples of the world. The right window's theme is best summarized by Mathew 28:20, "Lo, I am with you always", written on either side of the Christ figure whose arms are outstretched to include all.



Detail of Porter window



Detail of Bridges window



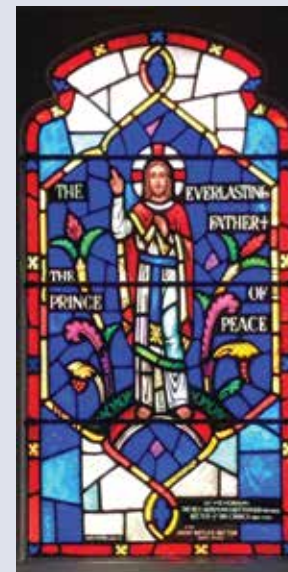
Lathrop window (left)



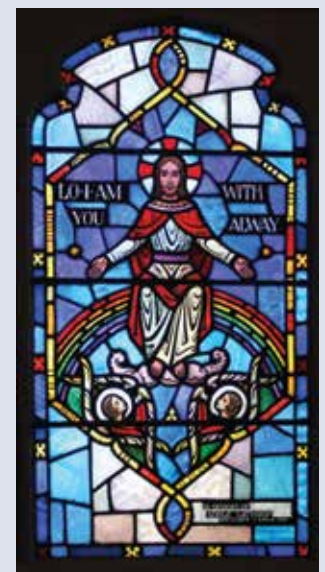
Wengren window



LeCompte window



Hutton window



Lathrop window (right)

The Wengren window, located above the door leading into the narthex was designed by Boston's Connick Associates, based on Jane Wengren's final painting. Connick Associates (1913–1986), was founded by Charles J. Connick. Their works can be seen in churches, schools, hospitals, chapels, and libraries throughout the United States and abroad.

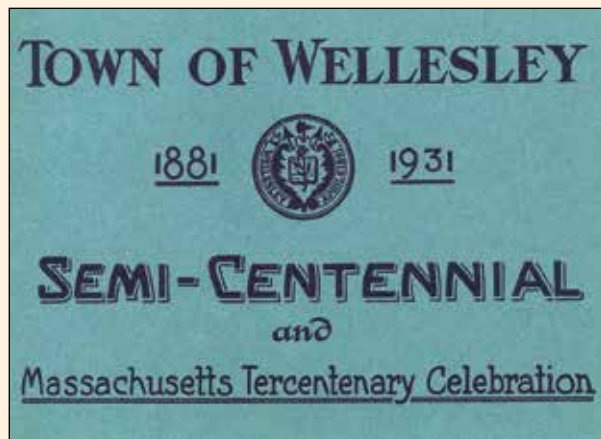
Finally, the list of artists who have brought their eye for beauty and their talent to St. Andrew's would be incomplete without mention of Rowan and Irene LeCompte who created the memorial window found over the outside door of the narthex for Alfred A. and Frances S. Burns. LeCompte's works include the rose window for the National Cathedral as well as 45 windows and six mosaics also for the cathedral.

1931 ~ 1940

LIKE THE REST OF THE COUNTRY, St. Andrew's found the 1930s financially challenging. In January 1931, the finance committee sought pledges to meet the year's budget, saying, "Everyone has a reduced income and sacrifice is necessary. Give what you can—but give it promptly. If you can't give, say so promptly—we shall understand." Despite the financial challenges that would be involved in a third renovation, it was decided to move ahead. The tie rods holding the roof and the building's sides together were replaced with wooden beams, and the nave was enlarged, thus adding another 100 seats. The new space became known as the north aisle.



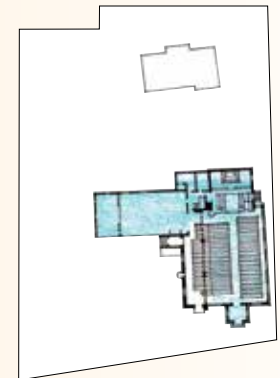
The Rev. Philemon Sturges
1935–1945



Booklet for Wellesley's 50th anniversary



Photo in booklet



1931

The first use of the outside pulpit occurred on the Sunday before Thanksgiving.

1935

The Church Service League carpeted the center aisle of the church and recarpeted the choir and sanctuary, much needed improvements.

1936

The rector organized and supported the Order of Sir Galahad for boys, which continued until 1943.

New pews for the north aisle, adding 100 seats, were used for the first time on December 20.

1938

1,300 people attended Easter Sunday services.

1939

On Sunday, May 7, the choir accompanied the rector to the Massachusetts State Reformatory for Women in Framingham for his monthly service.

1940

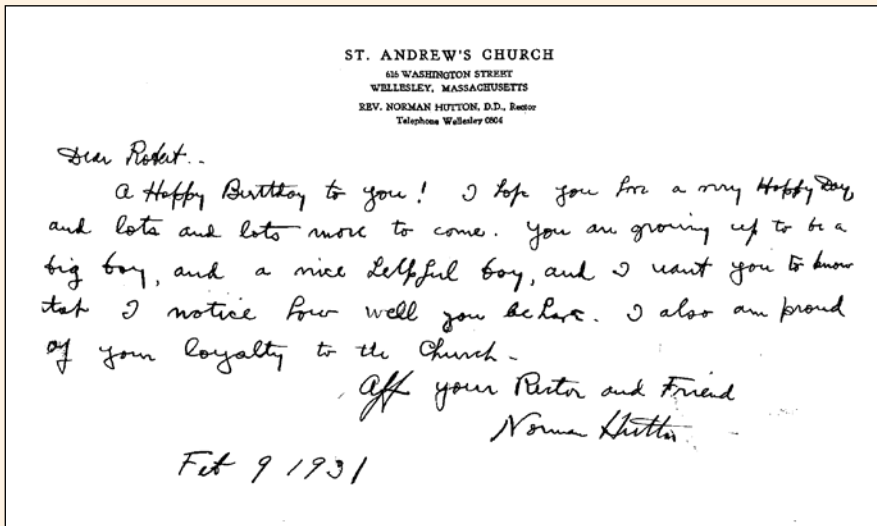
The parish welcomed to the Guild House a refugee family who fled the persecutions of Hitler because of their religion.



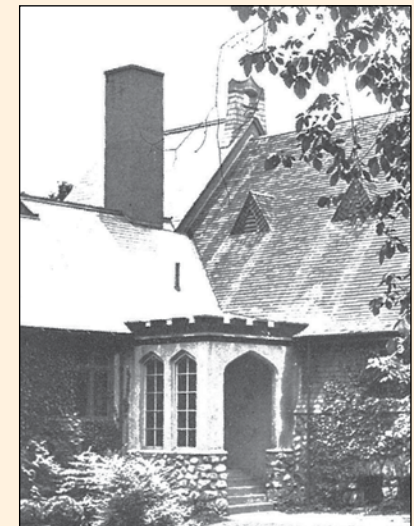
Middle pillar, north aisle

Throughout the 1930s and '40s St. Andrew's was busy serving the community and supporting relief work for the tragedies of the era—the Hurricane of '38, the Coconut Grove Fire in 1941, big snows, and, of course, the war.

On November 22, 1931, the children brought food and offered it at the foot of the outdoor pulpit. Dr. Hutton received it the name of the church. This was the first use of the outdoor pulpit. Used on Rogation Sundays during late '40s and '50s, the choirs and congregation marched out and the sermon was preached from that pulpit.



Letter to Robert Harvey, age six



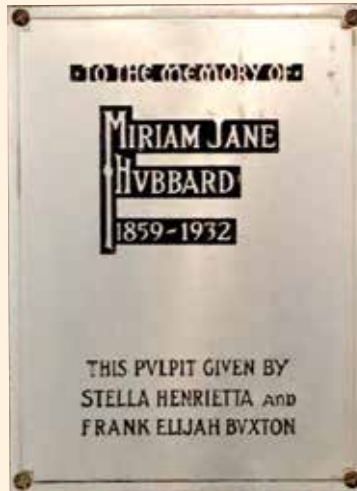
Sawyer porch



Door to outdoor pulpit

The rector has received a check for \$100 against the expense of providing three new exits to make our building comply with the state laws for fire and panic. "This is a thank offering that no greater price than money had to be paid." —1932

A pay telephone was installed in the Parish House. 1935



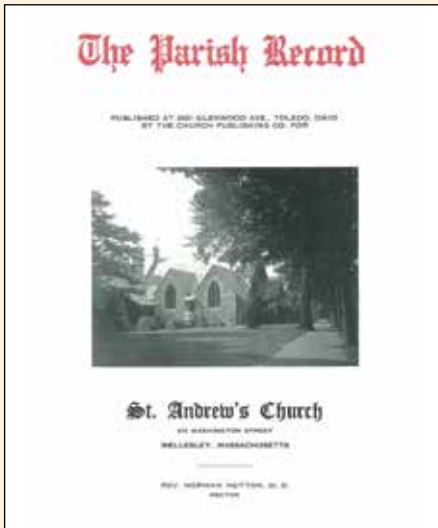
Memorial plaque for outdoor pulpit



MRS. ARTHUR CARROLL HARVEY
 One of Wellesley's most distinguished women, is general chairman of the annual Christmas sale and market, to be given next Wednesday, Dec. 8, at St. Andrew's Church, Wellesley. She will wear this lovely old costume when she presides over the Old Curiosity Shop.

(Sue Page Studio)

Anna Sherlock Harvey, from *The Boston Transcript*, 1936



The Parish Record, first issue. It was published monthly at a cost of 50 cents a year.

There will be the usual tables and two new features will be tried this year at the St. Andrew's Christmas Market. Luncheon and tea will be served in the "Greene House," the church school annex in the rear of the church. And we are to have an "Old Curiosity Shop." For this, Mrs. Harvey asks you to look through your attics (and those of relatives and friends) and collect china, glass, silver, lamps, and pictures—in fact any bric-a-brac you are tired of. —December 5, 1936

Appeals have already come from churches whose lands have been overrun for American churches to take over their work in the mission field, and the Church of England is looking to us to carry on much of her work throughout the world. The setting up of the great army cantonments in our own country offers a field of service for the church that it dare not disregard. —1940

1941 ~ 1950

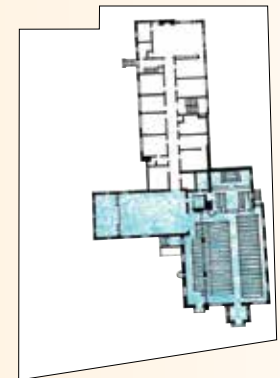
THE 1940S FOUND St. Andrew's parish hard at work. Husbands and sons fought in Europe and in Asia. Those at home volunteered for civil defense and the Red Cross. The women's guilds made garments and surgical dressings for the British War Relief and the Red Cross. With the coming of peace in 1945, life slowed. Parishioners looked around and decided to spruce things up. Cost shelved the renovation plans of 1947, but the plans for a new parish house moved forward in 1948. To make way for the addition, the Guild House was moved to Cottage Street and sold in 1949.



Rogation Sunday 1946 with service at outdoor pulpit



The Rev. Charles W. F. Smith
1945–1951



1941

Coin-a-Day became the mainstay of the Service League budget. Income from the mid-winter bridge parties, the spring rummage sale, and the voluntary dues of one dollar supplemented this source.

1942

The Junior Choir was chosen to lead all the choirs at the Diocesan Choir Festival at Trinity Church in Boston.

Historical Sketch: St. Andrew's, 1892-1942, by Edward E. Bancroft was published.

1943

The choir had copies of *The Hymnal 1940* for use by September.

1946

The annual dinner was held. Tickets sold for 95 cents.

The church school offering for Thanksgiving amounted to \$80.

1948

The existing Guild House was moved to Cottage Street to make way for the office and classroom wing addition.

1949

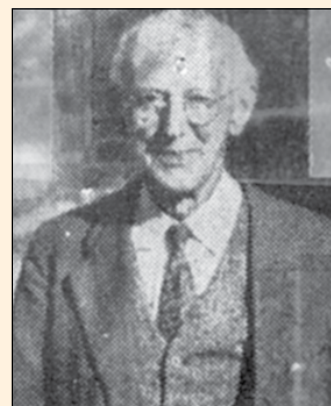
The Memorial Fund was established as a channel through which gifts of money in memory of relatives or friends could be converted into permanent additions to the furnishings of the church.



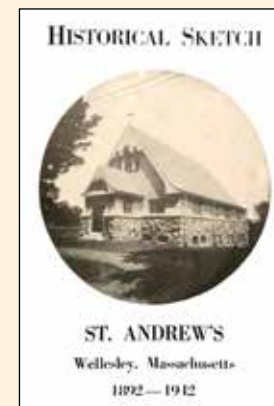
On Easter Day, there was placed in the sanctuary a new Bishop's chair, in memory of Mrs. Henry W. Hunnewell (1862 -1940) by her three daughters, Gertrude Hunnewell Donald, Mary Hunnewell Palmer, and Christiana Hunnewell Bartlett. —April 5, 1942



Junior Choir



Edward E. Bancroft, 1858-1950





The Harvey Room in the new parish house was named to honor Mrs. Arthur Harvey, president of the Church Service League for fifteen years, and devoted many years to other church work as well. Anna Sherlock Harvey (1872-1947), known as "Madame Harvey," a redoubtable matriarch of the church (as remembered by other parishioners who had known her), "ruled the roost with an iron hand." It was told that once when Dr. Hutton, the rector at the time, asked her to remove her hat, she responded by glaring at him and not removing her hat. —1949



May Fair Cupboard



You have doubtless in some corner of some cupboard if you seek,

Some choice objects long forgotten but quite nice and quite Antique.

We would like to come and get them, giving each the greatest care,

For we'll take them to St. Andrew's, and we'll sell them in the Fair.

Please notify before May 15.

Mrs. Traver Wel 5-1160 or Mrs. Cross Wel 5-1541



1951 ~ 1960

THE URGE TO FIX UP, TO RENOVATE—in essence, to return to peace and home for those who had been through the 1930s and 1940s—continued throughout the decade. In 1954, the original west entrance vestibule and shingle-style gable were removed, and the wall was pushed out to Washington Street. A new stone front entrance (the narthex), was then built. During the renovation, it was discovered that the roof was collapsing as a result of the 1921 and 1931 additions. Two original 1894 timber trusses were removed and three large, exposed steel trusses were installed. Off the southeast corner of the chancel, a small vestibule, porch, and exit stair were added.



Easter Sunday, 1953



The Rev. Samuel S. Johnston
1951–1964



1951

Our Kitchen's Secrets cookbook was published.

Project Mitten tree began.

Nearly 1,000 children were enrolled in Sunday school, necessitating two sessions per Sunday, one at 9am and one at 11am.

1953

The first issue of *Soundings*, St. Andrew's newspaper, published by parishioners and distributed by the first of each month, appeared.

Eliot House was purchased from Wellesley College to be used as a parking lot for the church.

1954

As part of renovation, a children's chapel was built in the basement.

1958

Coffee hours stopped being held on the first Sunday of the month.

First publication of *St. Andrew's Call*, a comprehensive parish bulletin, appeared.

Dishwasher was installed for \$3,600.

1959

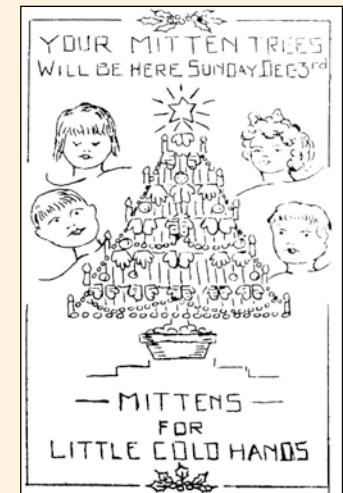
The Mistletoe Mart, Christmas Sale Extraordinary, was held on November 4 and began with a High Silver Brunch served in the Harvey Room.

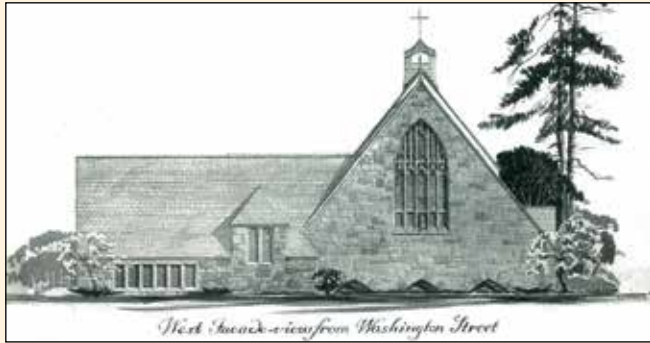
The church was bursting at the seams. The ushers were bringing in as many chairs as the fire department would allow. People sat on the chancel steps, on the cushions in front of the chancel rail, and stood along the walls. The church school was so crowded that two sessions, at 9 and 11am, were introduced. Nearly one thousand children were enrolled. —1951



Exuding confidence and total optimism in a future without bounds, the Rev. Johnston said, "St. Andrew's was known as the singingest, eatingest church in town."

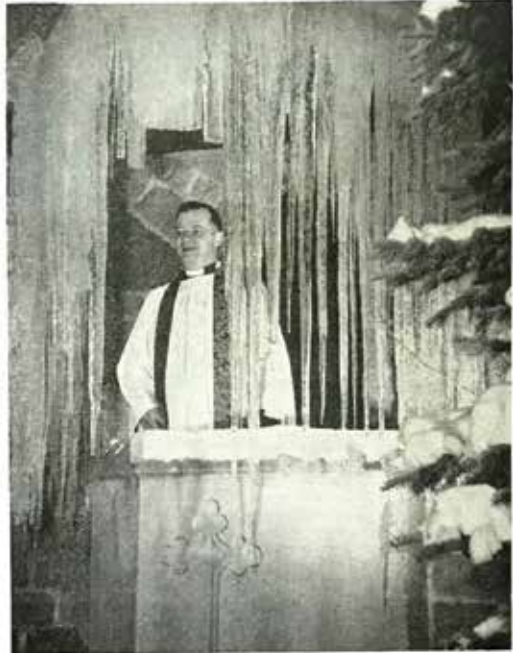
Project Mitten Tree began in 1951 when Chaplain Lt. Col. William E. Austill provided a Christmas party for more than 11,000 Japanese orphans. Servicemen cleaned and repaired orphanages, providing warm clothing and toys later. Austill ran a clothing drive for Korean orphans later. Moving to the V.A. Hospital in Boston in the late 1950s he erected a Mitten Tree each year and the tradition has continued.





Soundings

VOLUME ONE NUMBER FOUR
 ST. ANDREW'S CHURCH, WELLESLEY, MASS. FEB 1, 1954



JANUARY 17 REHEARSAL FOR ROGATION DAY ON MAY 23
 —Photo by James E. Shields

There's news being made at St. Andrews all the time. People are finding God. People are coming into new spiritual life. We believe you want to know about these things and thus the reason for *Soundings*. —1953



Richard and Marjorie Preston gave a Swiss Christmas crèche when they came to Wellesley in the late 1950s. The Prestons had met a Swiss carver in Lucerne, Switzerland who hand-carved the figures of the crèche.



Scouts waiting for the train at Newtonville, June 1957.

St. Andrew's CALL
PUBLISHED BY ST. ANDREW'S EPISCOPAL CHURCH, WELLESLEY, MASS.

St. Andrew's "Call" To The Parish
 For a long time there has been need for a comprehensive parish bulletin that would give news of events, people, plans, dates, etc. Thus the reason for the "Call" which will come to you each month, September through June.

The name, "St. Andrew's Call" can take our thoughts along several lines. This bulletin will make its call in your home, and keep you informed about your church. At the same time we will be reminded that St. Andrew was called by Jesus to be a disciple. So wholeheartedly did he respond that he was willing to give his very life in martyrdom. We hope the name will convey the idea that each member of the parish is called "to follow Christ, to worship God every Sunday in his Church, and to work and pray and give for the spread of his kingdom."

I am sincerely grateful to Mrs. Lillian Ritchie, Mrs. Paul Fager, Mr. Alexander St. John and Mr. William Zwigian for giving so much of their time and talent in getting this bulletin going. We hope you will find it interesting. Any suggestions or news items will be gratefully received.

SARAH S. JOHNSON, *Reviser*

We Met A Challenge Goal
 As most of our parishioners know, St. Andrew's accepted this year a Challenge Goal of \$5000 to be given and used for work in the diocese. This sum was divided equally between the Episcopal Theological School and St. John's Church, Roxbury. Excerpts from two letters of thanks follow:

**Episcopal Theological School
 Cambridge 38, Massachusetts**
 "It is a great privilege on behalf of the seminary to acknowledge this gift and to express to you, and through you to the wardens and vestrymen and parishioners of your church our very grateful appreciation. This gift will make essential assistance available to men now attending the school. Without this type of financial support the pressures in many instances would be so grave that training for the ministry could not be completed. Your gift helps, therefore, in strengthening one of the most crucial tasks of the Church in her inner life, that of preparing not only adequately but superlatively the men who are to be the clerical leaders of the Church in the next generation.
 Faithfully yours,
 JOHN B. COBURN, *Dean*

**St. John's Episcopal Church
 Roxbury 25, Massachusetts**
 "I can never really express the appreciation of our parish for your generosity. We are making preparations for our campaign now and, mindful of the present economic difficulties already affecting our people seriously, I am sure we'd feel rather discouraged at a minimum goal of \$10,000 without having such assistance as has come from the hearts of your people. As it is we expect a very hard fight, but we know God wants us to continue our work here, and your check is evidence that we are not alone in this ministry.
 Please express to the Vestry and all of the parish our thanks, and ask all to have us and our work and our community in their prayers.
 Faithfully in our Lord,
 JOHN J. HARMON, *Reviser*



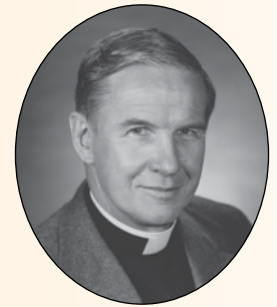
Children's Chapel in the basement

1961 ~ 1970

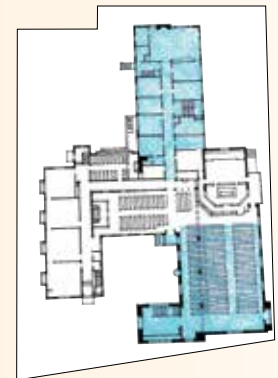
By 1963, ST. ANDREW'S MEMBERSHIP had again begun to overflow the church. Rather than radically change the building, it was decided to move the 1921 parish hall to the basement dining hall and convert its old space into a transept chapel and main nave wing, thus gaining 90 seats. At the same time, the main sanctuary was moved forward with a freestanding altar. This project was followed by the construction of a church school wing, which is now a Montessori school, and a children's chapel.



Freestanding altar installed with the 1964 renovations.

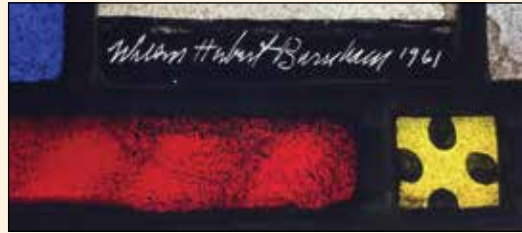


The Rev. William H. Clark
1965–1973



1961

Wilbur Herbert Burnham was commissioned to install four windows of three panels each, along the south wall.



1962

Harry Smith erected the Mitten Tree. His poster proclaimed: "Cold little hands in Korea can be made warm by the mittens you place on the Mitten Trees."

Mistletoe Mart gave \$5,000 toward the purchase of a new organ.

1965

The Casavant organ built by the Casavant Organ Co. of Saint Hyacinthe, Quebec, was installed.

Proceeds from the Bargain Haul held May 1 totaled \$3,529.81.

1966

Four pews in the transept chapel were designated as memorials.

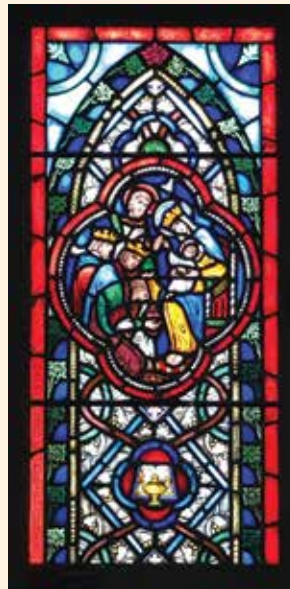
1967

A Jazz Mass was celebrated on Sunday, January 14.

Holy Communion was celebrated according to the new proposed liturgy. Comments and suggestions were welcomed and could be given to any of the clergy.

1969

St. Andrew's donated 284 pounds of good used clothes and six blankets to the Church World Service Clothing appeal.



Because of the crowded conditions during this building year, children will not be transferred from one class to another unless a parent for urgent reasons requests the change. Some classes are already filled to the capacity of the room and admission to these has had to be closed. —1963



We hope you will come to the coffee hour. If you still feel you are a newcomer please wear one of the small gold crosses which you will find at the entrance to the dining room. Wear it for as many Sundays as you wish and then please return it for another newcomer to wear. —1961



Before



After

**SUNDAY
HERALD
TRAVELER** section **3**
November 3, 1968

SOCIETY WOMENS HOBBIES

CHRISTMAS IS COMING!
(Photos by Calvin Campbell)

Christmas will be here in a few short weeks and ideas and fingers are flying at St. Andrew's Church in Wellesley Hills for the triennial Mistletoe Mart to be held in the Parish House, Thursday, Nov. 14 from 10 to 4 o'clock. It will feature antiques and collectors' treasures, this year, as well as fine crewel work, signed enamels and holiday decorations. There'll even be a Mink Boutique!

ALISON ARNOLD

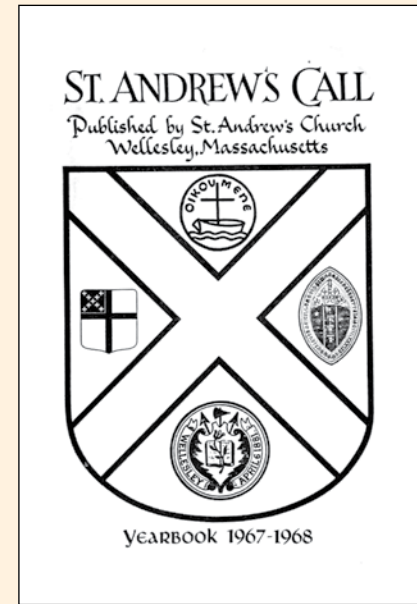


As General Chairman of the 1962 Mistletoe Mart, it gives me great pleasure to announce that, as a result of your combined efforts, we will be able to present the Church Service League with \$5,000 to be used toward the purchase of a new organ for St. Andrew's. —1962



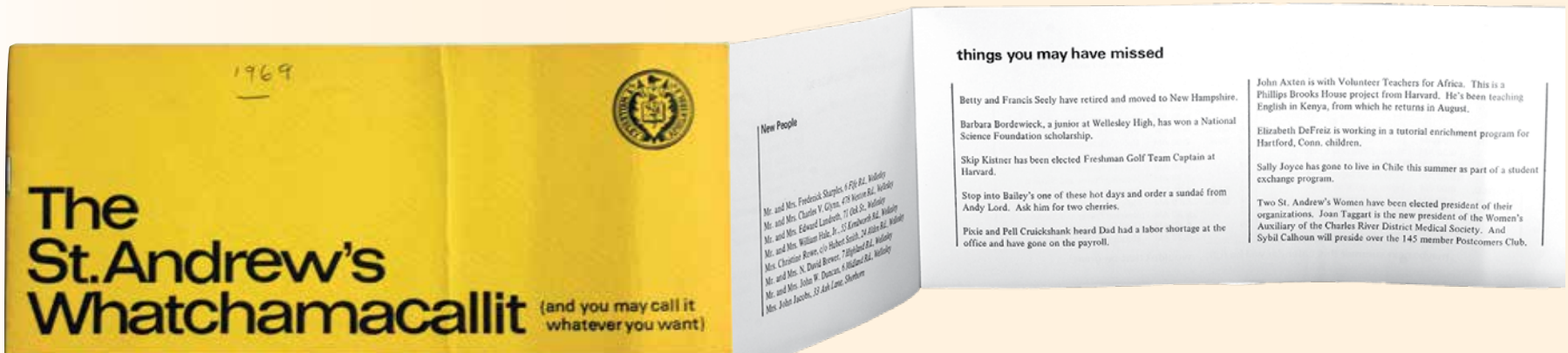


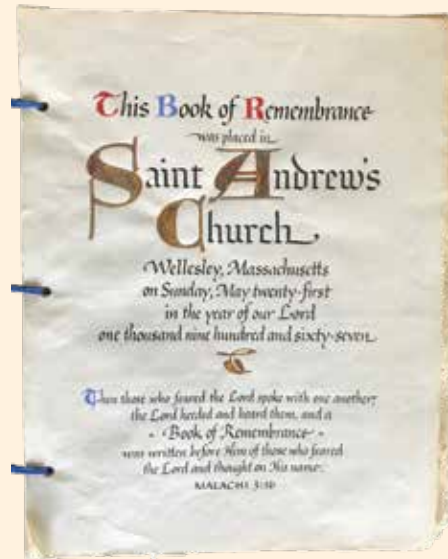
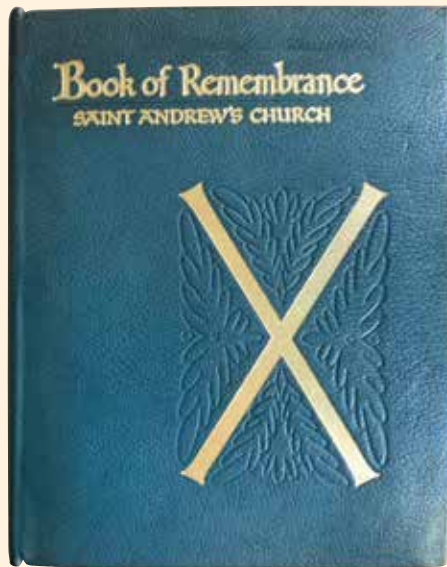
"The eatingest church in town. . ."



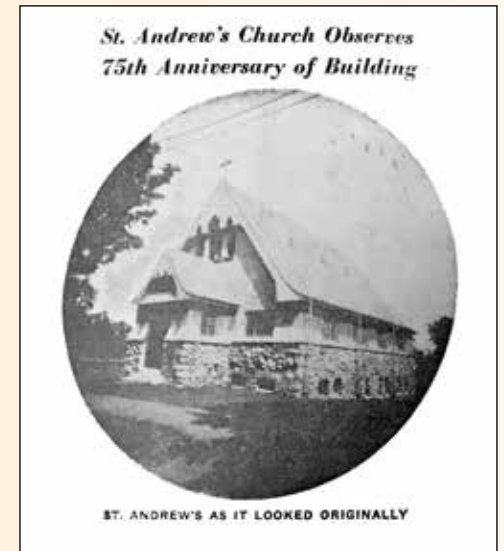
Sandwiches will be served at the Bargain Haul auction on Thursday, April 27, and there will be the traditional luncheon at the worker's sale on Friday, April 28. Unload your French Shop dresses now. —1966

Beginning Monday, June 9, the parish office will be open from 9am to 4pm five days a week and closed Saturday mornings. —1969





St. Andrew's Couple's Club



From *The Townsman*, November 27, 1969

Kneeling in Style

"I keep having the same horrible nightmare," Mrs. Frederick N. Peirce confessed to the reporter interviewing her. "We finally get all of the pieces put together, and none of it fits." The pieces Mrs. Peirce was referring to were the 61 feet of needlepoint that cover the kneelers at the altar railing.

Although there had been an appeal for funds to cover St. Andrew's kneelers as early as 1938, Mrs. Peirce's nightmare did not begin until 1963. In that year, the design of the church changed, a new organ was purchased, a freestanding altar was built, and it was decided to surround the altar railing with embroidered kneeling cushions. Harold F. Lindergreen was asked to create a design. His design joined the symbols of communion—a sheaf of grain lying across a wafer and a chalice wreathed with grapes next to a star—with symbols of time—a zodiac dividing the year into 12 units at the front of the altar and at the back, symbols representing the eight seasons of the Christian year. Mrs. Peirce translated the design into 25 patterns, one for each woman who worked on the cushions. Needles were not downed, and Mrs. Peirce's nightmare did not abate until 1964, when the cushions were installed.

So lovely were the kneelers that in 1979, it was decided to do needlepoint kneelers for the chapel altar (see page 34). Once again Lindergreen's talents were requested. This time, he chose as a theme New England's spring, summer, and fall foliage and flora. Ten embroiderers diligently worked on the design. As each segment was completed, Lindergreen's initials (HFL) and those of the embroiderer's were stitched into its corner. By January 1980, the kneelers were in place around the altar.



Sixty-one feet of needlepoint



Artist's rendering



1971 ~ 1980

THE SOCIAL UPHEAVAL that was hinted at in the 1950s became visible in the 1960s and 1970s. Across the country, segregation, civil rights, foreign policy, and feminism were topics of discussion, debate, and argument. St. Andrew's was not immune to this. Some felt the church should be more involved in these issues. Others felt that too much involvement had already led to a loss of the sense of community that was St. Andrew's trademark. To foster that sense of community, St. Andrew's decided to increase its support of programs within the greater Boston area that dealt with the issues. In 1977, Elsa Walberg was hired as assistant to the rector, thus continuing St. Andrew's tradition of welcoming women into its service.



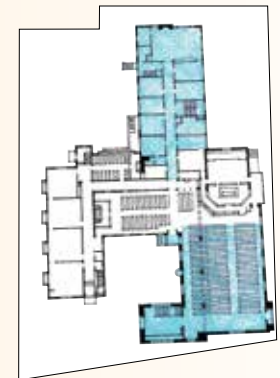
The Rev. James R. MacColl
1974-1982



Children's Chapel



Children's Chapel altar



1972

A break-in at the parish office resulted in the theft of offerings and checks.

1974

The sixth triennial Mistletoe Mart was held.

St. Andrew's welcomed Rev. James R. MacColl, III, D.D.

1976

An electronic security system was installed.

Bargain Haul added a gourmet lunch and antique rummage sale to its offerings.

Mistletoe Mart donated \$3,000 to a new community center.

1977

Rev. Elsa P. Walberg, M.Div., the first woman ordained deacon in Massachusetts, joined St. Andrew's and was ordained to the priesthood.

The proposed new *Book of Common Prayer* was placed in pews.

1978

Feed My Sheep cookbook was sold at Bargain Haul.

1980

Hand-worked needlepoint covers for the transept chapel kneelers were installed.

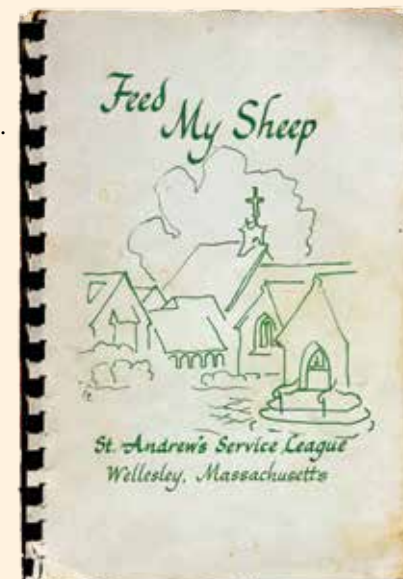
Rectory on Princeton Road was purchased.

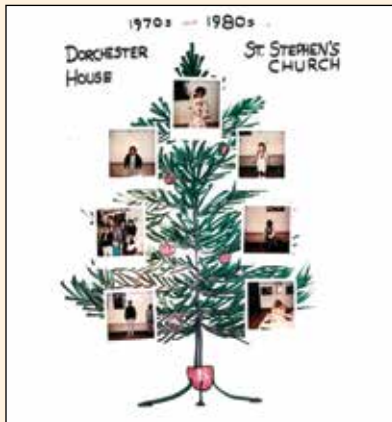


Dear God, I am the only one in my class who is Chinese. They all say that you are American but, I am too, so you could be Chinese right?
—Your friend, Kim

Dear God, We are going on vacation for two weeks Friday so we won't be in church. I hope you will be there when we get back, when do you take your vacation?
—Goodbye, Donnie

Dear God, Are boys better than girls? I know you're one but try to be fair. —Sylvia





Mistletoe Mart's culinary department depends solely on donations, so please keep this in mind when you are putting up relishes, jams, jellies or other favorite recipes. You'll be called in the fall, so save a jar or two (or more!) for the Culinary Corner. —1977





The St. Andrew's Guild, 1978



The Rev. Elsa Walberg

1981 ~ 1990

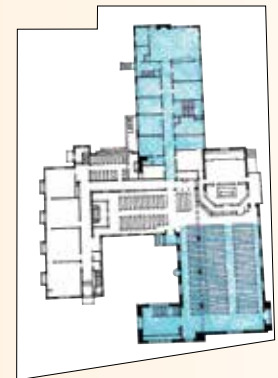
WHILE THE 1970S HAD BEEN MARKED BY UPHEAVAL, the 1980s found St. Andrew's looking to its history and traditions as it moved forward. Thus, in 1983, the Reverend MacColl urged parishioners to "show friendliness is important to St. Andrew's" and to support the Presiding Bishop's Fund for World Relief (Episcopal Relief & Development). Continuing a longstanding tradition of music, the youth group performed *Godspell* in 1986 and *Joseph and the Amazing Technicolor Dreamcoat* in 1987. As the decade ended, a new *Call* was published, highlighting the activities of both St. Andrew's and the Episcopal Church as a whole.



Snapshots of life at St. Andrew's through the years.



The Rev. Vincent W. Warner
1983–1989



1982

St. Andrew's bridge party was held January 19. All proceeds went into the storm window fund.

The stained glass window in the transept chapel was dedicated to the memory of William S. Zorigian.

St. Andrew's Gourmet Society [SAGS] started serving breakfast after the 8am service.

1983

Shrove Tuesday pancake supper was held February 15 in the dining room, starting a new tradition.

A large type *Book of Common Prayer* was made available.

1984

A crystal chalice, given by Bishop and Mrs. Coburn to the Diocese's Bicentennial, was at St. Andrew's for all three services of Holy Eucharist. The chalice was "visiting" each parish that year.

1985

New Gospel Book dedicated on May 19.

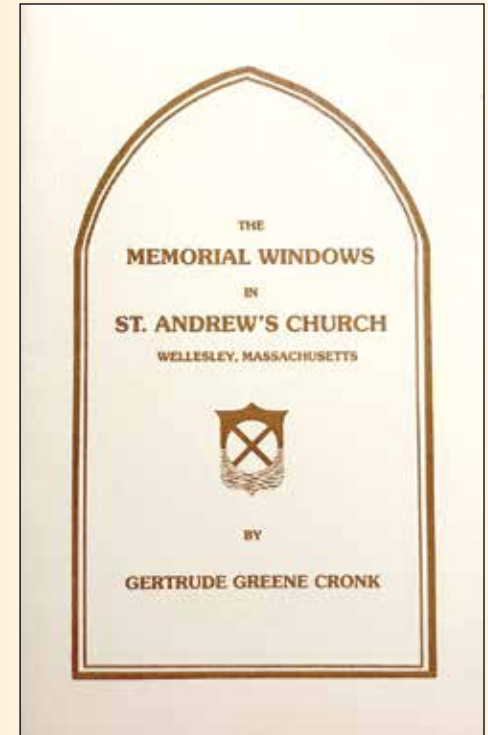
1989

St. Andrew's communion silver was stolen and never recovered.

1990

Bargain Haul planned a silent auction, only for parishioners, to be held during coffee hours April 22 and 29.

The window shows the St. Andrew's logo designed by William S. Zorigian for use on parish stationery, leaflets, and other printed materials. It depicts St. Andrew's Cross over the universe. The sea reminds us that St. Andrew was a fisherman before being called by Christ to be a disciple.





St. Stephen's summer camp



Class in Children's Chapel



On the Day of Pentecost, we ask you to wear something red in observance of the day when the Church came into being. Red balloons will be released following the services. —1984

Don't be surprised to see a sheep, a goat and perhaps a donkey on the church lawn! Resembling the animals from a manger scene, they symbolize our Christmas outreach program of gifts of living animals through Heifer Project International. Sheep will go to needy neighbors in Maine and goats to Haiti, the poorest country in the Western Hemisphere. —1987





St. Andrew's Gourmet Society (SAGS)

Are you partial to kippers? We plan to have kippers for anyone who requests them. Put on your tartans and come to St. Andrew's Day breakfast at 9am. Scottish fare will be on the menu and the guest piper will set the mood musically. —November, 1987

Parishioners are asked to leave the kitchens as neat as they find them. Please don't expect someone to clean up after you. —1983



A highlight of the annual Diocesan Historian's Meeting was the rector's welcoming greeting, with its wit, which threw the assembled historians into gales of laughter: "This is the country of the free, God is gone from twelve to three." —May, 1986



Rose Erler, parish secretary



Patricia MacKinnon, bookkeeper



The Rev. Martha Hedgepeth

1991 ~ 2000

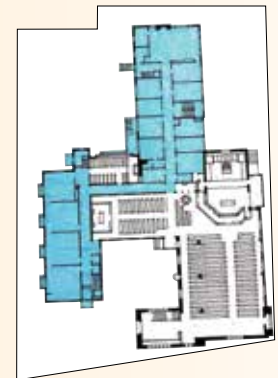
IT SHOULD NOT COME AS A SURPRISE that St. Andrew's celebrated its centennial with a renovation of the main church and parish hall. Jan Gleysteen, an architect and parishioner, suggested improvements in the altar position and platform design, and in the relationship between the main nave and the transept chapel. Renovations to the chancel area provided more height for the organ, and opening the archway between the chancel area and the nave improved space and sound. New lighting and sound systems were installed. The steel trusses, inserted in 1963, were clad in wood in the style of the 1894 timber trusses.



Architect's rendering for the 1994 renovation



The Rev. Addison C. Hall
1990–2012



1991

Mozart concert in honor of the 200th anniversary of the composer's death was held.

The ordinations of Laura Ahrens and Karen Vickers Budney were celebrated.

1992

A Silent Auction was held on February 2 and 9 for the benefit of Wellesley Food Pantry and St. Stephen's Church.

Coventry Suppers began in October as a means of getting to know other parishioners.

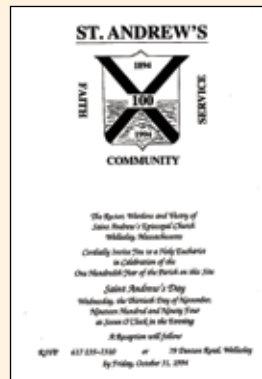
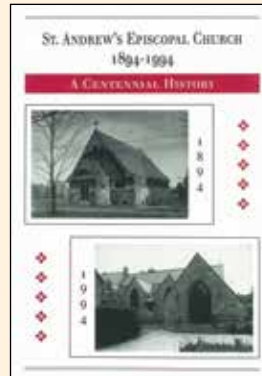
To celebrate the church's centennial in 1994, the parish mounted a campaign to raise funds for the endowment and a refurbishment of the main church and parish hall.

1994

The St. Andrew's Kneeler Society (SAKS) built church kneelers for the sanctuary.

The seventh and final construction phase of the first 100 years of St. Andrew's Episcopal Church was completed on October 30. Bishop Coadjutor of Massachusetts, Rt. Reverend M. Thomas Shaw, preached at the Evensong rededication service.

St. Andrew's Episcopal Church, 1894-1994: A Centennial History was published.





1995

A new elevator was welcomed with a festive tea in the Harvey Room.

The Cloister Garden was blessed in May.

In November, parishioners performed Benjamin Britten's, *Noye's Fludde*, a children's opera.

1997

Gabriel Faurè's *Requiem* was presented at Vespers in November.

Parish Variety Show was held.

1998

E-mail was installed, voice mail began, and website, standrewswellesley.org was established.

The start of 5pm Sunday service began in September.

Rectory renovations, including expansion, completed.

1999

Third cookbook, *The Book of Common Food*, was published.

2000

An elm tree was planted to commemorate Reverend Hall's tenth anniversary.

Many Gifts, One Spirit campaign to purchase organ and renovate Montessori wing began.

The Wellesley Townsman May 27, 1998 33

RELIGION

Inspirational pilgrimage to the Holy Land

By Shirley Johnston
Wellesley Townsman Staff Writer

Twenty-six members of Saint Andrew's Episcopal Church participated in a pilgrimage to Jerusalem from May 21 to May 23 after a year-long preparation of meetings, research, papers, speakers, and local field trips. The pilgrimage was a part of a larger celebration of the 100th anniversary of the founding of Saint Andrew's Church in Wollastou.

Parishioners making the trip were: Mary and David Atkinson, Denise Bason, Margaret and Jim Blackwell, Evelyn and Dennis Callahan, Charlotte Curry, Cecile Gokhale, Ann and Lane Johnson, Shirley Johnson, Margaret Jones, Ingrid Kohn, Harry Kohn, Robert Klotz, Paul Merry, Dorothy Post, Joan Smith, Adine Wicks, Cricket and Chuck Warner, and Tilda and Fred Zilvage.

The inspired leadership of Adine Wicks, Jill, Ann Johnson and Jim Blackwell well prepared an agenda that included excursions to the major Christian sights of the Mount of Olives, Gethsemane, the Church of the Holy Sepulchre, the Via Dolorosa, Bethlehem, Casseiv, Nazareth, Mount Tabor, the Sea of Galilee, and the River Jordan.

The Jewish holy places that were visited were the Western Wall (the "Wailing Wall"), Masada, Migdala, Sea of Galilee, and the Sea of Gennesar, where the Dead Sea scrolls were discovered.

Masses were celebrated by the Sea of Galilee at the Church of Saint Peter (the Simon Church), the Cedar Evangelical Episcopal Church in Nazareth, and at Saint George's Cathedral in Jerusalem.

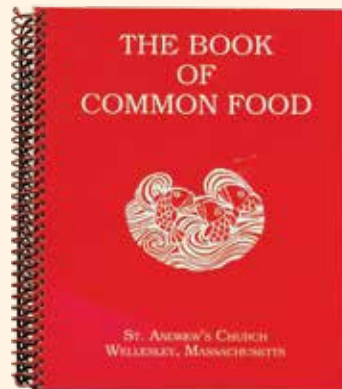
Members of the group had two lunches at the Lutheran House in Jerusalem, and lunch at the Abbot's of Ein Ger on the Sea of Galilee and at Ein Gedi on the Dead Sea.

While in Jerusalem, there were also talks given by a Palestinian, an Israeli, and an Arab-Palestinian Christian.

The action-packed pilgrimage combined history, archeology, and ground-day views in a way that was informative, inspirational, and instructive to the pilgrims. The trip was a total success on every level, and was thoroughly enjoyed by all who participated.



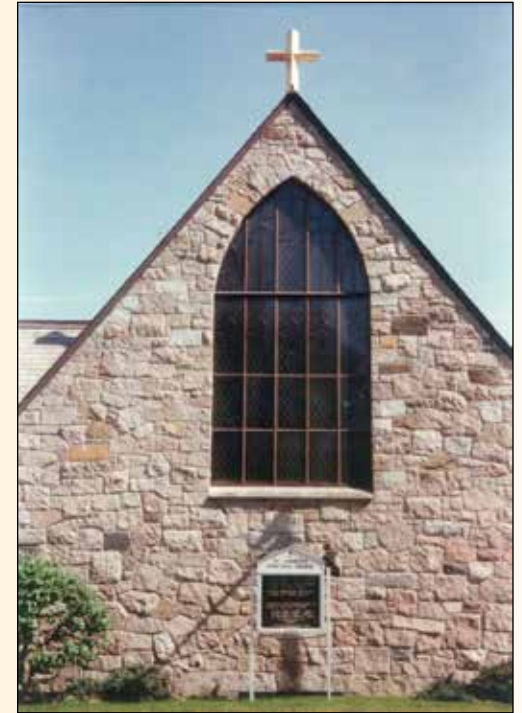
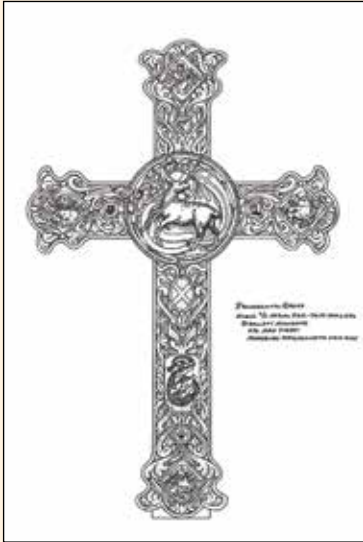
Pilgrims from Saint Andrew's Church in Wellesley, visiting Saint Margaret's Hostel in Nazareth, are, from left: back row, Cecile Gokhale, Cecile Gokhale, Robert Klotz, Fred Zilvage, Paul Merry, Yvonne Zilvage, Cricket Warner, Chuck Warner, Lane Johnson, Joel Ives, Adine Hall; middle row, Ingrid Kohn, Dennis Callahan, Evelyn Callahan, Mary Atkinson, Jim Blackwell, Charlotte Curry, Ann Johnson, David Atkinson; front row, Dorothy Post, Joan Smith, Adine Wicks, Margaret Jones, Margaret Blackwell, Denise Bason, Shirley Johnston, Harry Kohn.



Today is the 450th anniversary of the Book of Common Prayer. In 1549 the first copies were printed in March, and introduced to parishes in June. Those at either end of the Protestant and Catholic spectrum did not accept it with much joy. Its successor in 1552 is more similar to our current prayer book. —1999

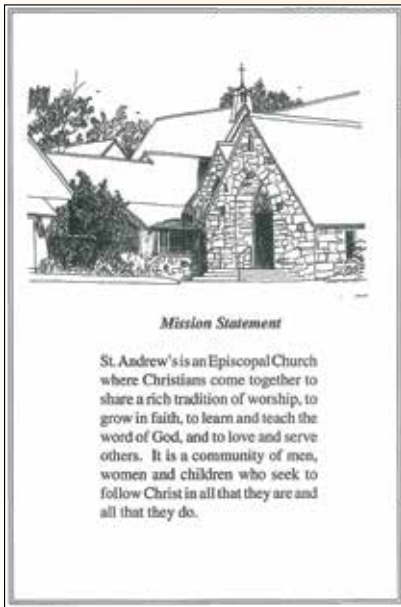


The large gold cross has been hanging in the newly-refurbished Denton Road entry to the parish hall and office wing. We think that this prominent place for a cherished parish symbol gives a dramatic sense of entrance to the Denton Road doorway, and speaks of our central identity to many people who use that entry. We continue our search for a processional cross a third larger than the present one (thus more legible) to stand behind the main altar. —1996



The new processional cross is almost completed and looks magnificent. Drawings of the cross are on display at coffee hour this morning. It will be blessed on Palm Sunday, after which there will be a forum with Charlotte and Bill Hallett, the artisans, as they explain the many details of its design and construction. The cross will be used for the first time on Easter Day. —1997





Steve Killeen, sexton



As part of 1994 centennial, plans were made to send group to El Hogar.

The high school youth group continues its wonderful tradition of hosting a Haunted House for the whole community. Money raised will help support the service projects of the group. This is a thrilling, sometimes even a hair-raising experience, and we invite children of all ages to come. —2000



El Hogar chapel, Honduras

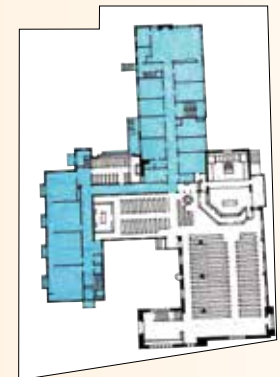
2001 ~ 2010

THE NEW CENTURY ENVELOPED St. Andrew's in large and small events. Weddings and births were celebrated, and it was hoped that a pilgrimage to the Holy Land would occur. Instead, September 11 arrived, bringing the hardest days of the decade. A service of sorrow and healing was held on September 14. . . .

Sometimes it is hard to know what is a small event and what is a large one. In 2006, a monthly service commitment was made to the Salvation Army in Framingham. In 2007, five American Liberty elm trees were planted in the Memorial Garden as part of an Eagle Scout project. And in 2009, a Blessing of the Boilers occurred, complete with balloons.



A Legend of St. Nicholas opera.



2001

December 6, 7, and 9, *A Legend of St. Nicholas*, an opera written by Denny Bacon with libretto by Addison Hall, was performed.

2002

Maundy Thursday Seder Dinner was held to celebrate the Passover.

A legacy society was established to recognize and thank those who have chosen to support the work of St. Andrew's through a planned or deferred gift.

2003

Mardi Gras Silent Auction and Social was held.

New associate rector, Rev. Edith Dolnikowski, was welcomed.

2004

Dedication of renovated kitchen in honor of Janet Thompson was held on April 18.

Newly renovated classrooms were opened.

2005

In November, a group of seven parishioners headed to Christ Church Bay Saint Louis in Mississippi to help with reconstruction work needed as a result of Hurricane Katrina.



Blessing of the Animals

Experience the “nuts and bolts” aspect of the Parish Office by volunteering your time and talent to help answer phones, assemble mailings, using the copier and folding machines, and in general assisting the Parish Secretary in her varied duties.

—2001

As of November 11, 2001, St. Andrew's Church has received \$5,030.32 for the September 11 Disaster Relief Fund. Thank you for your kindness and generosity.

—Offering, November 11, 2001



The Rev. Edith (Edie) Dolnikowski (center)



Janet Thompson



"It works!" Blessing of the Boilers



2006

Paper recycling started at St. Andrew's with the Abitibi bin in the parking lot.

Juget-Sinclair organ was installed.

2007

On Easter Sunday, following the 11am service, members of the congregation were invited to join the choir in singing the *Messiah's* "Hallelujah" chorus, accompanied by brass, timpani, and organ.

2008

The blessing of car keys was held to acknowledge and celebrate young people who recently received their driver's license and to ask God's blessing to be with them on the road.

Fire and Heat Campaign to replace heating system to improve building "envelope" began.

2009

Electronic version of *The Call* established.

2010

A pilgrimage to England was extended due to an Icelandic volcano eruption.



Two principal projects have been recently recommended by the property and finance committees and approved by the vestry for near term action. First and most noticeable will be the replacement of the bluestone front steps making entry to the church somewhat hazardous. Second and hopefully less noticeable will be installation of a code compliant upgrade to the existing fire alarm system. —2007

“It is our mission to join in God’s transforming mission. We will form our children, our young people, and our adult members, through prayer, worship and scripture, to become followers of Christ, that we might discern where God is carrying out this mission in our worlds. And we will send our people to serve with Christ, inviting everyone and all of creation to share in the just reign of God.”

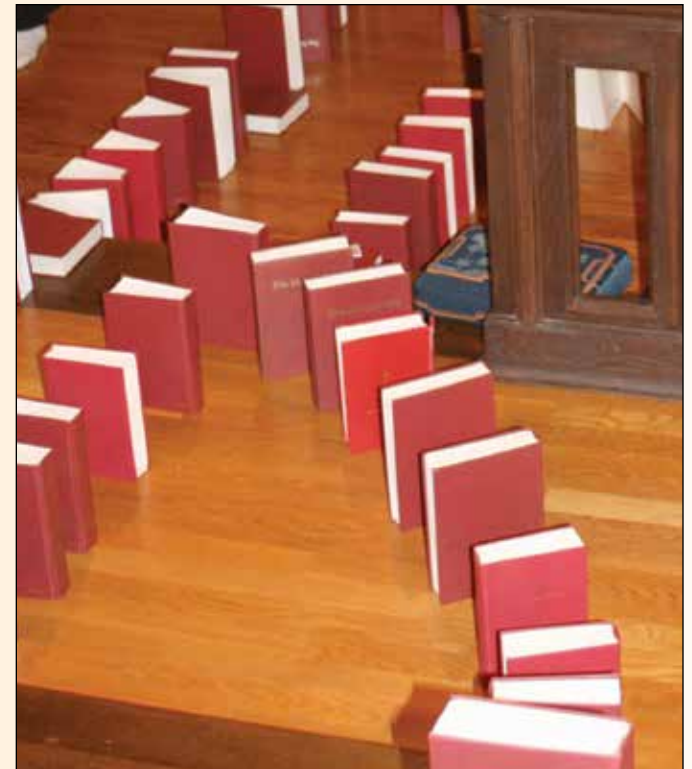
—Presentation by Bishop Shaw, Lent, 2003



Epiphany school work day



Youth group limbo



Middle school lock-in dominos



Navajoland youth mission trip

Make a Joyful Noise

An Episcopal Church service was held Sunday afternoon at the town hall. . . . These interesting services and excellent music seem to inspire people and are increasing attendance.

—*The Wellesley Courant*, January-April 1887

While the *Wellesley Courant* often wrote about Episcopal services at the town hall, no one seems to know if the move to the church in 1894 included the organ purchased by the Ladies Aid Society. Certainly music filled the air. The processional for the dedication service was "Oh, 'twas a joyful sound" and the recession-al was "The Church's one foundation is Jesus Christ her Lord." Given this, it is likely that the organ and Edith Tufts, the organist and conductor of the choir, moved to the church, if not in tandem, at least within a few days of each other. By 1902, that organ was ready for retirement, and St. Andrew's first pipe organ was installed. Tufts continued as organist and music director.

The pipe organ served until its problems were noted in rhyme during a meeting in 1940:

There once was a young parson named Phil
Whose Church had a large north aisle bill
"The bill's almost paid,"
To the Parish he said,
"But the organ now squeaks fit to kill."

The young parson was the Reverend Philemon Sturges, Jr., and according to many, the organ did not squeak, rather its wind chests leaked so badly, the organ lost pitch, which threw the choir out of tune. Fortunately by 1940, it was possible to retire the debt. The Easter offering, special gifts, and church service league pledges allowed for the purchase of a Wicks Company organ.

While the new organ may not have been the reason the Junior Choir was chosen to lead all others at the Diocesan Choir Festival, the lack of leaking wind chests didn't hurt.

By 1964, the Wicks organ was worn out. The Casavant Organ Company was selected to build an organ to be placed on the east wall of the chancel. Although a fine organ, the Casavant was never totally satisfactory. The vertical lines of the pipes detracted from the Bartlett window and the challenging acoustics of the chancel limited the organ's tonal quality. The search for a new organ began in 2003. Architect Jan Gleysteen redesigned the chancel area to provide more height and an open archway between the chancel and the nave. After careful consideration, the Juget-Sinclair Company was selected to provide the organ, and the Casavant organ was refurbished and transferred to St. Theresa of Lisieux in South Hadley.



2011 ~ 2019

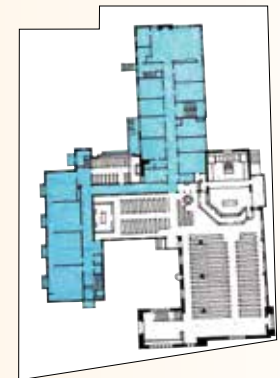
IN THE LAST 125 YEARS, St. Andrew's has seen much—two world wars, the Great Depression, and 9/11 among other things. Yet, even in the midst of these events, parishioners have looked to the future. During the Great Recession of 2008, parishioners replaced the church's heating system in response to the *Fire and Heat* campaign. Now there are visions of updated lighting and sound systems, fresh paint, new wall panels, refinished floors, and something extra for outreach partners. At present, St. Andrew's may look a little worn around the edges, but it is still ready to host meetings, suppers, Bargain Hauls, and clubs. It still welcomes Sunday services, mid-week services, and mornings of contemplative prayer. Sunny days, gray days, snowy days, fall days, St. Andrew's stands steadfast through them all, waiting to greet its guests.



The Rev. Adrian Robbins-Cole
2013–



Rogation Sunday 2017



2011

The high-school youth group took a mission trip to Navajoland in New Mexico.

2012

A gift of \$1,200 was given to Ecclesia Ministries *common cathedral*.

2013

Rev. Adrian Robbins-Cole was installed as rector.

2015

Rev. Margaret Schwarzer and Rev. Catherine Healy were welcomed.

2016

Faith and Practice Series began.

Taizé-style meditative service was held in Children’s Chapel.

St. Andrew’s Turkey Trot team was reinstated on Thanksgiving Day.

2017

First *Lenten Meditation Guide*, written by parishioners, was published.

2018

Pilgrimage to Italy took place in May.

2019

Launched *Grateful for Our Past, Giving for Our Future*, 125th anniversary campaign.

Maria (Mia) Kano ordained as deacon.



Ben the Church Cat, 1994–2012

Our own church cat, Ben, will be 17 years old on February 13. Although he has been out of sight at church services of late, he has ministered to so many of us here at St. Andrew’s in his own particular way that I have suggested this Evensong be sung in his honor. —2011



2011 Stewardship Crossword Challenge

Across

- "note"worthy complement to worship service
- guild that decorates the church
- city where St. Stephen's is given us
- person who cares for what God has given us
- St. Andrew's monthly newsletter
- longer version of homily
- 1st T of being a steward
- programs that help the community

Down

- learning
- financial commitment that helps St. Andrew's
- project which has our children contribute to sustainable living
- 2nd T of being a steward
- word that describes us all getting together
- 3rd T of being a steward
- group that studies the sacred book
- top committee of lay leaders
- first name of woman who has a sanctuary for poor and homeless women.



The Revs. Edie Dolnikowski and Bill Eddy



Delivering holiday dinners

Many thanks to everyone at St. Andrew's who contributed food to the Wellesley Food Pantry on Brown Bag Sunday! We took 60 bags to the Food Pantry. —June 2013



Flat St. Andrew's



Vacation Bible School



The Rev. Brian Rebholtz



common cathedral

Thank you to our Rite-13 leaders and pie-bakers for filling our parish hall with the wonderful smell of apples and cinnamon and the Wellesley Food Pantry with delicious apple pies for the holidays! —2014



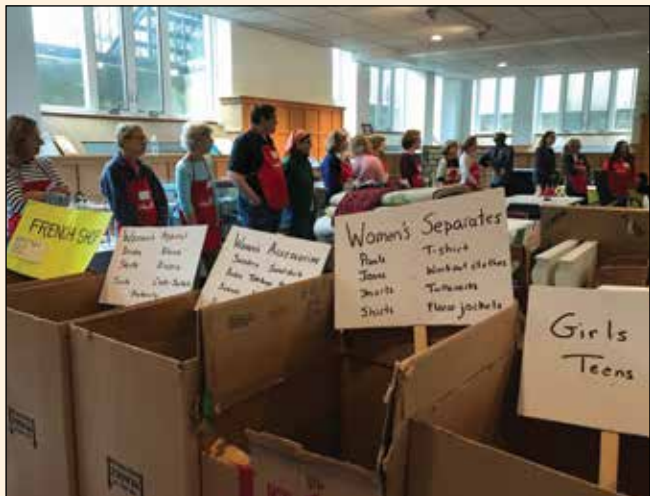
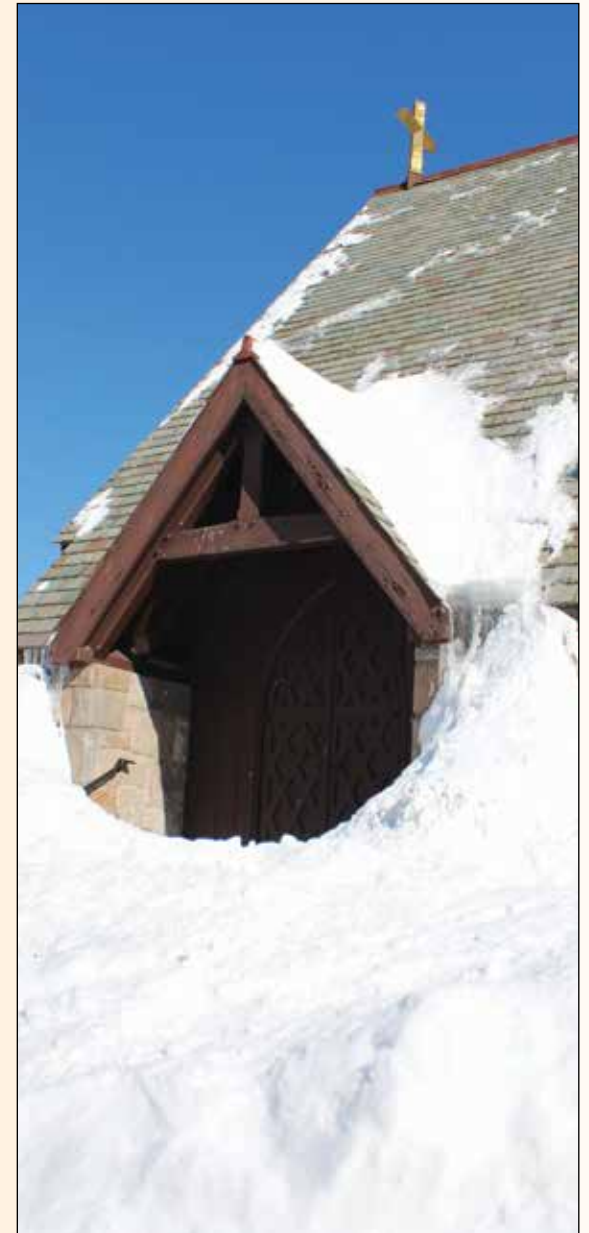
The Rev. Karen Vickers Budney



Katharine Clark, parish administrator



Offerings



Bargain Haul prayer circle



Bargain Haul raised a record \$33,000.00 plus! The treasures found during the day were countless.
—May 2015



“I am glad to be the rector of a church named after Andrew whose extraordinary response to Jesus’ call should never cease to challenge, intrigue, and inspire us all on our journeys of Christian discipleship.”

—The Rev. Adrian Robbins-Cole

Phrases like “Bless the Lord, my soul” will be sung over and over. . .candles will flicker, and we will share in five minutes of silent prayer.

—November 2016



Helen (Wardie) Mannix, music minister



A video of *Rodney, the Church Mouse* operetta is posted on the St. Andrew's website. —2017



Christmas



Suffragan Bishop Gayle Harris



The Revs. Margaret Schwarzer and Catherine (Cat) Healy



Ready for Homecoming Sunday



The Fellowship Committee invites you to celebrate Spring with a delicious tea and treats in the parish hall. —May 2018



Pilgrimage to Italy 2018





Mrs. Luisa Hunnewell hosts parish picnic



The Rev. Maria (Mia) Kano



2019 anniversary banner



There is still time to participate in the 125th Anniversary Capital Campaign, *Grateful for Our Past, Giving for Our Future.* —2019

Our annual Day of Service had an exciting new component! We created 12,500 dried meals to distribute to Pearl Street Cupboard & Café in Framingham. That's 100 meals for each of the 125 years that St. Andrew's has been in Wellesley. —October 2019



125th Anniversary Gala

Index

- “A Kaleidoscope of Color”, 10
 Ahrens, Laura, 40
 Altar, 6, 25
 “Altars and Alterations”, 6
 Amiel, Henri-Frédéric, 60
 Bacon, Denny, 46
 Bancroft, Edward E., 18
 Bargain Haul, 26, 28, 32, 36, 44, 52, 55
 Bartlett, Christiana Hunnewell, 10, 18
 Bartlett, Henry Hunnewell, 10
 Bartlett, Nelson S., 8, 10
 Ben, the Church Cat, 52
 Bennett, Elizabeth F., 4
 Blessing of the Animals, 45, 54
 Blessing of the Boilers, 45, 47
Book of Common Food, The, 42
Book of Common Prayer, 32, 36, 42
 Brooks, Phillips, 2
 Budney, Karen Vickers, 40, 54
 Burnham, Wilbur Herbert, 10, 11, 26
 Burns, Alfred and Frances, 12
 Casavant Organ Company, 26, 50
 Children’s Chapel, 22, 24, 25, 31, 32, 52
 Choir, 4, 5, 9, 14, 48
 Choir’s, Children’s/Junior, 18, 32, 50
 Christ Mission, 2
 Church school, 8, 18, 22, 25
 Church Service League, 8, 14, 18, 20, 27
 Clark, Katharine, 54
 Connick Associates, 10
 Connick, Charles J., 12
 Coveney, Charles C., 5
 Cronk, Gertrude Green, 10
 Crosses, Processional and Transept, 43
 Dolnikowski, Edith (Edie), 46, 53
 Donald, Gertrude Hunnewell, 18
 Earle, Edward Hyde, 6
 Eddy, William (Bill), 53
 Fanny E. Lampson ramp, 26
Feed My Sheep, 32
Fire and Heat campaign, 48, 51
 Girl’s Friendly Society, 2, 4
 Gleysteen, Jan, 39, 50
Grateful for Our Past, Giving for Our Future campaign, 52, 59
 Guild House, 4, 14, 17, 18
 Hallett, Charlotte and Bill, 43
 Harris, Gayle, 57
 Harvey, Mrs. Anna Sherlock, 8, 15, 20
 Harvey, Robert, 14
 Healy, Catherine (Cat), 52, 57
 Hedgepeth, Martha, 38
Historical Sketch: St. Andrew’s, 1894-1942, 18
 Hunnewell, Francis W. (1838-1917), 4, 6
 Hunnewell, Mrs. Henry, 10, 18
 Hunnewell, Mrs. Luisa, 59
 Hunnewell, Walter, 40
Hymnal 1940, The, 18
 Juget-Sinclair Organ Company, 48, 50
 Kano, Maria (Mia), 52, 59
 Killeen, Steve, 44
 Kneelers, 30, 32, 34, 40
 “Kneeling In Style”, 30
 Lathrop, Adele (1875-1956), 8, 12
 Lawrence, William, 5
 LeCompte, Rowan and Irene, 10, 12
 Lenten Meditation Guide, 52
 Lindergreen, Harold F., 30
 “Make a Joyful Noise”, 50
 Mannix, Helen (Wardie), 57
Many Gifts, One Spirit campaign, 42
 Memorial/Cloister garden, 42, 43, 45
 Memorial Windows, *see* Stained glass windows
 Mistletoe Mart, 22, 26, 27, 33
 Order of Sir Galahad, 14
Our Kitchen’s Secrets, 22
 Outdoor pulpit, 14, 15, 17
 Paddock, Benjamin, 2
 Palmer, Mary Hunnewell, 18
 Parish hall, 19, 25, 40
Parish Record, The, 15
 Peirce, Mrs. Frederick N., 30
 Pentecost, Day of, 37
 Pilgrimages, 42, 45, 48, 52, 58
 Pipe organ, 3, 4, 6, 26, 27, 39, 42, 48, 50
 Preston, Richard and Marjorie, 24
 Project Mitten Tree, 22, 26
 Rankin, Agnes Wilkes, 11
 Rebholz, Brian, 54
 Rectors, St. Andrew’s Callan, John J (1923-1928), 7
 Clark, William H. (1965-1973), 25
 Dean, Ellis (1913-1922), 3, 5
 Hall, Addison C. (1990-2012), 39, 46
 Hayes, William E. (1895-1901), 1, 2
 Hutton, Norman (1929-1934), 7, 8, 11, 12, 14, 20
 Johnston, Samuel S. (1951-1964), 21, 22
 MacColl, James R. (1974-1982), 31, 32, 35
 Nattress, George (1901-1913), 3
 Robbins-Cole, Adrian (2013-), 51, 52, 56, 57
 Smith, Charles W. F. (1945-1951), 17
 Sturges, Philemon (1935-1945), 13, 50
 Warner, Vincent W. (1983-1989), 35
 Rectory, 2, 3, 32, 42
 Red Cross, 3, 17
 Rite-13, 54
 Rodney the Church mouse, 57
 Sanborn, Earl Edward, 10, 11
 Sawyer Memorial Porch, 8, 9, 14
 Sawyer, Reuben K., 4
 Schwarzer, Margaret, 52, 57
 Shields, Roselle Lathrop, 12
Soundings, 22, 23
St. Andrew’s Call, 22, 24, 28, 35, 38
 St. Andrew’s Centennial, 39, 40
St. Andrew’s Episcopal Church, 1894-1994: Centennial History, 40
 St. Andrew’s Episcopal Church archives, 35; banner, 59; breakfast, 38; Gourmet Society (SAGS), 36, 38; Guild, 17, 19, 34; Honor Roll, 24; musical productions, 35, 42, 45, 46, 57
 Stained glass windows
 Bartlett Memorial, 8, 10, 50
 Bridges, detail, 12
 Hutton, 12
 Lathrop, 12
 Porter, detail, 12
 Saint Joan of Arc, 11
 Schweitzer, Albert, 11
 Sir Galahad, 11
 Wengren, 12
 Wood, detail, 11
 Zorigian, 36
 Tailby, Joseph, 4
 Thompson, Janet, 46
 Transept chapel, 6, 25, 26, 30, 32, 36, 39
 Tufts, Edith, 8, 50
Usher’s Manual, 19
 Vacation Bible School, 53
 Walberg, Elsa P., 31, 32, 34
 Wengren, Jane, 12
Whatchamacallit, 28
 Wicks Company, 50
 Youth mission trips, 24, 49, 52

Life is short, and we have too little time to gladden the hearts of those who travel the way with us.

So be swift to love; make haste to be kind; and may the blessing of God Almighty, Father, Son, and Holy Spirit, be with you now and always.

—Henri-Frédéric Amiel

Name	Residence
Mrs John A Porter,	Wellesley
Egnes J. Galtus	Wellesley
Charlotte E. Greenbank	Cliff Road, Wellesley Hills.
Chas A Stillman	Wellesley Hills.
Harriet A. Stillman	Wellesley Hills
Lillian A. Goldthwaite	Wellesley, Massachusetts
Abby L. Wood	Wellesley
Katharine Wood	Wellesley
Annie L. Wood	Wellesley
The Salt water	Wellesley
Edith A. Sawyer.	Wellesley.
Bertha L. Caswell	Wellesley
A. Delia Landerburn	Wellesley.
M. Virginia Smith	Wellesley.
Cora E. Dapleton Dye.	Wellesley
May S. Spang	Wellesley
H. B. McWilliam.	"



ST. ANDREW'S
EPISCOPAL CHURCH
WELLESLEY, MASSACHUSETTS